



working to end homelessness

Impact Report

07/01/2024 - 6/30/2025

Harford Family House is the largest provider of shelter and support for families and individuals experiencing homelessness in Harford County.

Harford Family House Board

Sandra Osborn, Chair

Senior Vice President/Operations, Harford Bank

Jim Owens, Co-Vice Chair

Senior Vice President, The Whiting Turner Contracting Company

Kim Zavrotny, Co-Vice Chair

Funeral Director, McComas Funeral Home

Brooks D. Shertzer, Treasurer

Partner & COO, Donohue-Hart-Thompson Financial Group

Lynese Domiano, Secretary

Chief Financial Officer, Acadia Windows

Frank Kellner, Immediate Past Chair

Vice President, Harford Mutual Insurance Co

Jennifer Barnett

Physician Assistant, Medstar Medical Group

Scott Buckmaster

Senior Director, SAIC

Marlene Butler

Community Representative

Carrienne Decarlo

Director, Human Resources, Harford Community College

Krista Demcher

ACORN

Kellie Edris

VP of System Governance, University of MD Medical System

Scott Elliott

Senior Vice President, Harford Bank

Jane Erisman

Senior Counsel, U.S. Department of Justice

Mark Freyer

Senior Vice President, HAR-CO Credit Union

Erin Germann

Veni Vidi Vici Treatment Services

Laura L. Johnson

Attorney, Gordon Feinblatt LLC

Amber Kackley

Vice President, Elite Home Entertainment

Tim Langhauser

Founder, Compass Home Group

Kim Lentz

JD Carpets, Inc.

Will Reiber

Patrol & Field Operations Commander, Aberdeen Police Dept.

Christina Woodie

Assistant Vice President, M&T Bank

Johnny Woods

MAJ (Ret)

Sheariah Yousefi

Director of Business Development & Government Affairs, Carefree Kitchens, Inc.



421 S Union Avenue
Havre de Grace, MD 21078-33461
Ph: 410.273.6700

info@harfordfamilyhouse.org
www.harfordfamilyhouse.org

Contents

- 1** CEO Letter
- 2** Mission
- 3** Needs We Address
- 4** Programs & Services
- 5** Year in Numbers
- 6** Our Future
- 7** Impact Stories
- 8** Impact Stories
- 9** Partnerships, Advocacy
- 10** Our People
- 11** Funding the Mission
- 12-16** Thank You, Donor Wall



Dear Friends,

Each year, as we reflect on our journey, I'm reminded that home is more than just a roof over one's head; it's about safety, dignity, and a foundation for hope. At Harford Family House, we remain unwavering in our mission to help families and individuals who are experiencing homelessness in Harford County achieve independence through housing, support, and resources.

I'm honored to share with you our Annual Impact Report, a story not only of numbers and milestones but of resilience, partnership, and transformation. Inside, you'll find a comprehensive look at the past fiscal year, our challenges, our victories, and the incredible community of supporters who made our progress possible.

We believe that ending homelessness requires more than shelter. It involves compassion, collaboration, and commitment from an entire community. With your support, we are building not only places to live but also paths to stability and self-sufficiency.

This year, that commitment has inspired one of our most ambitious efforts yet: the planned expansion of our Emergency Shelter in Belcamp. We are actively working to secure funding to expand our facilities to accommodate four additional families and eight additional beds for women. Once complete, this expansion will significantly increase our capacity to serve those in crisis and offer greater stability and hope to those who need it most.

Thank you for being part of this journey. Your partnership makes a difference, one family, one person, one story at a time.

With gratitude,



Robin Tomechko
CEO, Harford Family House

“ For years, Harford Family House has served as a place of hope and healing for individuals facing homelessness, but we've long recognized the lack of emergency shelter options for families in our community. This expansion changes everything. It means that parents will no longer have to face the heartbreaking choice of being separated from their children to find a safe place to sleep. - Robin Tomechko, CEO ”



Our Mission

To assist families and individuals experiencing homelessness in Harford County to achieve independence through housing, support, and resources dedicated to improving their financial stability and mental well-being.

About Us



Since 1989, Harford Family House has been providing housing, support, and resources to families with children in Harford County experiencing homelessness. Over the years, Harford Family House has helped more than **5,200** people and over **850** families, thanks to the dedication of our board members, professional staff, volunteers, churches, civic agencies, donors, business leaders, and other community members.

Our Vision

Harford Family House, Inc. is committed to building a start-to-finish solution to end homelessness for families with children and single adults in Harford County.

Values Statement

Harford Family House fosters personal responsibility and dignity while providing resources and support. We cultivate a path to wholeness by:

Showing Compassion

Setting Structure

Identifying and Developing Potential

Strengthening the Individual and the Community



“ They shaped a way for me to go forward, and I did. I could never have done this on my own. I don't know where we would be without HFH.- Vanessa, Resident ”

Mission

What Problems Do We Solve?



Harford Family House addresses the critical issue of homelessness among families and individuals in Harford County by providing safe, stable housing and individualized support services. Many of the people served are facing overwhelming challenges such as job loss, domestic violence, mental health struggles, or financial instability, often without a support system to fall back on. Harford Family House empowers individuals to break the cycle of homelessness and achieve long-term independence by offering shelter, case management, life skills education, and access to resources.

Why Does Our Work Matter?

Our work matters because stable housing is the foundation for personal and community well-being. When families have a safe place to call home, children do better in school, parents can focus on employment, and the community becomes stronger, safer, and more resilient.



Our Approach

Every day, we provide more than just shelter; we offer hope to families and individuals working to rebuild their lives. Through compassionate help and tailored support, we walk alongside our clients on their journey toward stability, dignity, and independence. Our work is rooted in the belief that every person deserves the chance to experience wholeness, where basic needs are met, potential is nurtured, and a brighter future is within reach.

“ Through HFH's help, I was not alone in navigating this struggle. ”

Jessica, Resident

Programs



EMERGENCY SHELTER: Provides shelter and case management services designed to support individuals experiencing homelessness on their path to housing stability and independence.

TRANSITIONAL HOUSING: Offers case management and housing in an apartment unit or home managed or owned by Harford Family House to families experiencing homelessness and individuals participating in the Emergency Shelter program.



PERMANENT SUPPORTIVE HOUSING: Assists individuals or families with disabilities who are experiencing chronic homelessness by providing housing, case management, and other support services.

READY BY 21: In partnership with Department of Social Services, this program offers shelter and case management to those under 21 years of age who have been part of the foster care system.

21



AFTERCARE: This program offers residents who have exited one of our programs continued case management support, an invitation to programming, workshops, household supplies, and self-care supplies for up to two years.

Services

Physical and Mental Wellbeing- Addiction Resources and Treatment Services, Health Screenings, Tobacco Cessation, Mental Health Services, Primary Healthcare Services

Life Skills- Budgeting/Financial Literacy, Credit Counseling, Writing Skills

Spiritual/Social- Bible Study, Arts & Crafts, Board Games, Holiday Celebrations

Personal Development- Life Coaching, Hair Cuts, Legal Services, Food Pantry

Job Readiness- Job Search, Resume

Services- Writing Skills, Job Training Skills
Affordable Housing Search and Placement-
Rental Assistance

Case Management- Weekly Meetings,
Quarterly Education Workshops

Children Services

Holidays- Holiday Celebrations, Holiday Shop, Santa Wish List

Educational- Back-to-School Supplies, Homework Club, Healthy Habits Fitness and Nutrition

Recreational- Yoga, 4H Club, Summer Field Trips, Horseback Riding



HFH was the catalyst that helped me rebuild my life from ruins. HFH was my guardian angel. HFH gave me the hope to know there is light at the end of the tunnel

Atiya, Former Resident



The Year in Numbers

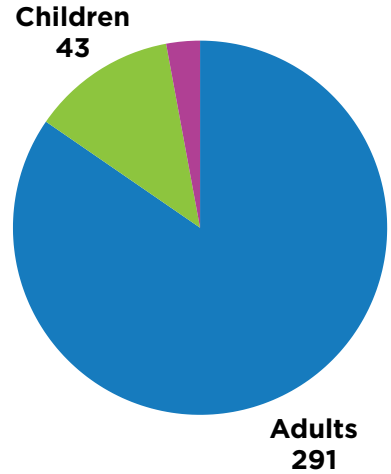
RESULTS Harford Family House helped transfer **191** individuals into stable housing!

334

TOTAL PEOPLE SERVED



85%
success rate



COMMUNITY SUPPORT

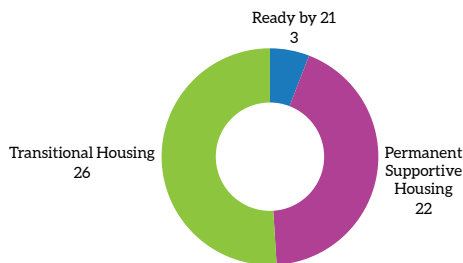
Our community continues to humble us with the support they extend to those experiencing homelessness in Harford County.

- Hours Volunteered **8,273**
- Community Partners **50**
- Faith-Based Contributors **50+**

Harford Family House works diligently to make a big impact in Harford County for those experiencing homelessness.

HFH Transitional/Permanent Housing

HFH Family House owns or manages 40 properties, offering those experiencing homelessness their own space to grow and prosper into a life of independence.



HFH Emergency Shelter

HFH Emergency Shelter offers 32 beds to those experiencing homelessness for up to 90 days at a time.

223 individuals served

10,784 nights of shelter provided

17,000 meals served

\$82,600 food donated

“ Thank you to all the donors. Without you, we would have never had a real Christmas. ”
You saved our Christmas! - Chris, 12 yrs. Old Resident

Year in Numbers

Our Future

Building Hope, Expanding Impact

The need for safe, stable housing in Harford County continues to grow, and so does our vision for the future. Looking ahead, Harford Family House is focused on expanding both our reach and our resources. At the heart of this vision is our Belcamp emergency shelter expansion, a transformative project currently in development that will, for the first time, allow us to serve families at this location and increase capacity for women in crisis. This project, expected to be completed by 2027, is more than just a construction plan; it's a commitment to meet the evolving needs of our community with compassion, dignity, and readiness.



In addition to the planned expansion of the Emergency Shelter in Belcamp, we are planning to establish a new Family Emergency Shelter in Aberdeen. We will continue our Transitional Housing Program with a special focus on supporting families. Our Permanent Supportive Housing Program, Ready By 21 Program, and Aftercare Program will continue to be determined by our residents' needs. We will continue to provide wraparound services to residents across all our programs, helping each family and individual achieve lasting independence.



We cannot do it alone. The future of Harford Family House will be shaped by those who walk alongside us: donors, volunteers, advocates, and community partners who believe that homelessness should never be permanent, and hope should never be out of reach.

Together, we will build a future where every neighbor has not just a place to live, but a place to belong.

“ *My experience at HFH Emergency Shelter has been extremely positive, which helped me obtain housing and a new start. - Patricia Resident* ”

The Nanfack Family

Program: Transitional Housing

The Nanfack family, a family of five, became part of our program in early 2023. Their journey with us began when they immigrated from Cameroon in search of a better future. With plans to live with a family member in Edgewood, they were unexpectedly left without housing when the landlord refused to allow their entire family to stay because of occupancy restrictions. Suddenly, without a place to call home, they turned to Harford Family House.



The Nanfack family embraced every opportunity from the moment they entered our program, participating in services, securing employment, and enrolling in English classes at Harford Community College to overcome language barriers. Along the way, they earned healthcare certifications to build lasting career pathways, and through a partnership with Habitat for Humanity, they now have a permanent place to proudly call home.

The Nanfack family's story is one of courage, perseverance, and transformation. It reminds us that with dedication and community, you can accomplish anything. We are proud to have played a part in their journey to independence.

Robert

Permanent Supportive Housing



Robert Harris, a United States Army veteran, came to Harford Family House after years of compounding health challenges dramatically changed his life. Following a heart attack, Robert was no longer able to work, placing strain on his family and his independence. Living in a rural area without access to public transportation, Robert faced significant barriers to care. The support he received filled critical gaps, ensuring he could attend appointments and manage his health safely.

Today, Robert reflects on his journey with gratitude and perspective. He encourages others who may be struggling to remember that they are not alone, and that hope often begins with the willingness to seek help. Robert offers heartfelt thanks, expressing deep appreciation for their compassion and support. His words serve as a powerful reminder of the lasting impact stability, care, and dignity can have on a life.

Robert's journey reflects the power of compassionate support paired with personal determination. With the right care, coordination, and dignity, a veteran who once felt alone found reassurance, stability, and a place to heal.

“ I was beaten down and broken. Just having HFH believe in me gave me the drive to make a way for myself. - Crystal Morris, Former Resident ”

Greg O'Donnell

Program: Transitional Housing

After losing custody of his two daughters while struggling with addiction, Greg made the brave decision to enter sober living and begin rebuilding his life. During their time apart, his daughters were placed in separate foster homes. During this time, the youngest was diagnosed with nonverbal autism and ADHD, and the oldest also received an ADHD diagnosis. Despite the challenges, Greg remained steadfast in his goal to reunite his family. Right before Christmas, he received the joyful news that his daughters were coming home.



Since their reunion, Greg and his girls have flourished. His youngest daughter has now gained the ability to speak and participates in both onsite and community programs tailored to her needs. Both girls receive weekly visits from volunteers with expertise in special needs education who provide one-on-one academic support. One of Greg's proudest moments came recently when his youngest daughter learned how to ride a bike.

Through faith, determination, and the compassion of our supporters, Greg and his daughters are thriving and looking forward to a future together filled with hope

Patricia

Program: Emergency Shelter, Aftercare



After experiencing homelessness with nowhere to turn, Patricia was connected to Harford Family House during a hospital stay. Living with bipolar disorder and facing significant instability, she was referred to our emergency shelter by a hospital social worker. What she found there was not just a safe place to stay, but a caring community ready to walk alongside her. She recalls her time in the shelter as a positive, supportive experience, sharing how much she appreciated the staff's kindness and the sense of normalcy created through activities like painting and bingo.

During her stay, she worked closely with her case managers, Fay and Sonia, who helped her take essential steps toward rebuilding stability. She soon received help locating permanent housing. Today, she is proud to have her own apartment, a "cute place," as she describes it. It is near health services, the library, the senior center, and the park. The location and sense of independence have been deeply meaningful to her.

Reflecting on her journey, she shares this message for others who may be struggling: You have to want the help, and when you do, Harford Family House will be there to support you every step of the way.

“ Every single person here made me feel like I wasn't alone. ”

Alicia, Former Resident

Partnerships: Stronger Together

At Harford Family House, we know that ending homelessness takes a community. That's why partnerships are at the heart of everything we do.

This year, we've continued to strengthen our connections with state and local leaders, whose support ensures that critical funding and resources reach those who need them most. These collaborations enable us to participate in broader conversations about housing, poverty, and prevention, ensuring that broader systems of assistance support our local solutions.

We are deeply grateful for our **business community**, whose generosity goes beyond financial contributions. Local businesses have offered job opportunities to our clients, sponsored our events, and helped raise awareness through shared networks and platforms.

Faith-based partners continue to be a vital part of our mission, offering not only financial support but also volunteers, donated goods, and spiritual encouragement to the individuals and families we serve. Their compassion helps extend our reach and impact across Harford County.

None of this would be possible without individuals like you, **community members** who show up, speak out, and invest in creating a future without homelessness. Together, these partnerships form a robust network of care and commitment. Because when we unite our voices, resources, and hearts, we move closer to a world where everyone has a place to call home.

Advocacy

Raising Voices for Those Without a Home

At Harford Family House, advocacy is an essential part of our mission. While we provide direct services to individuals and families experiencing homelessness, we also work to address the systemic issues that lead to housing instability in the first place.

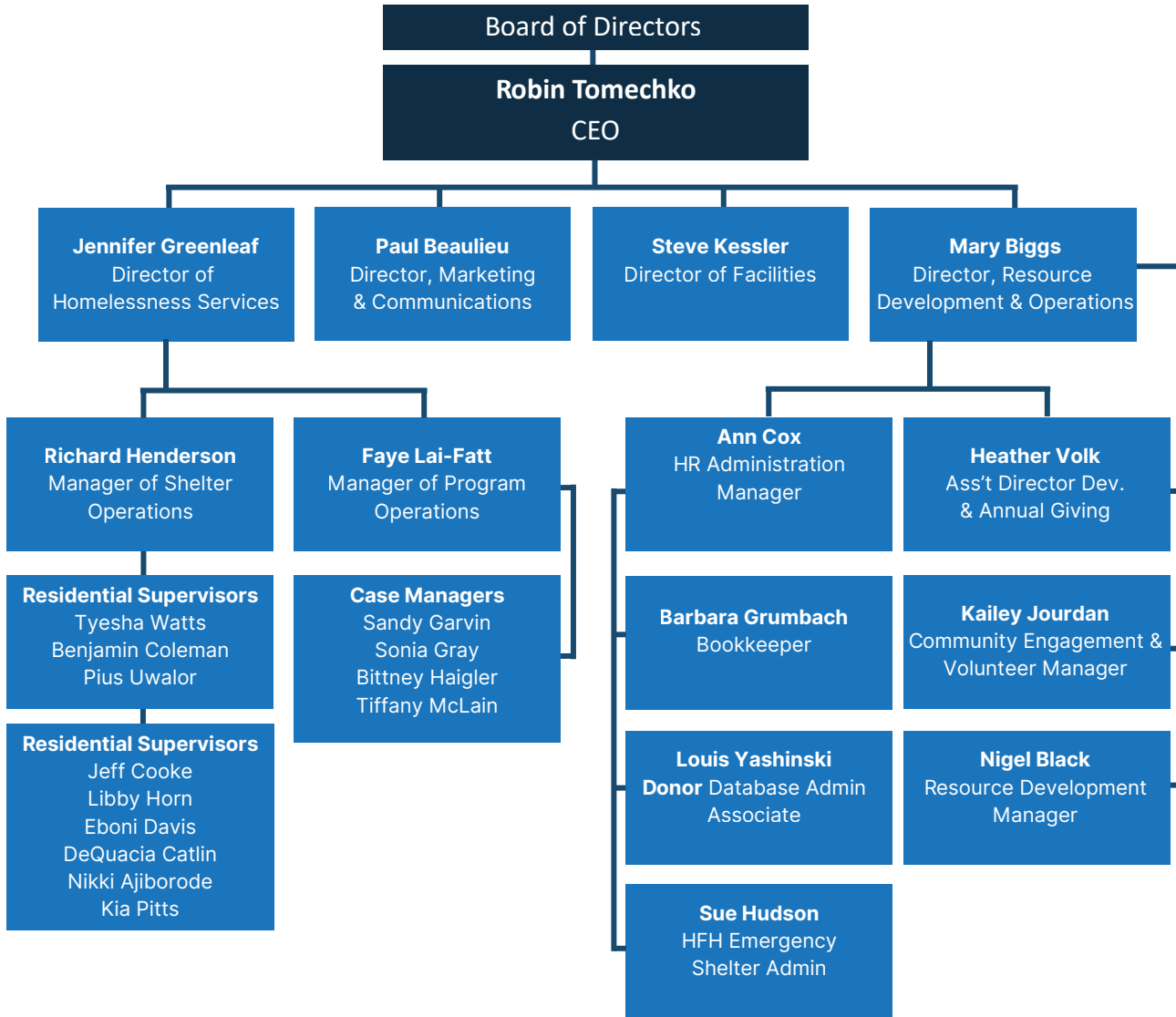
We amplify our voice in the community by educating the public, engaging with local leaders, and dispelling misconceptions about homelessness. By hosting community forums and collaborating with other service providers and statewide coalitions, we aim to ensure that homelessness is neither overlooked nor misunderstood.

We continue to advocate for policies that increase access to affordable housing, improve support for youth aging out of foster care, and invest in the mental health and social services that help individuals achieve long-term stability. Our team has also been intentional about raising awareness through our events, media outreach, and Homelessness Awareness Month activities, ensuring the stories of those we serve are seen, heard, and valued.

As the need in our community grows, so does our responsibility to speak up for our clients, for equity, and for lasting solutions. With your support, we are not just responding to homelessness, we are working to prevent it.

“ *I was scared to ask for help, but now I see that I am not alone. It gave me hope when I didn't have any.* - Amy, Former Resident ”

Harford Family House Organizational Chart



Our People

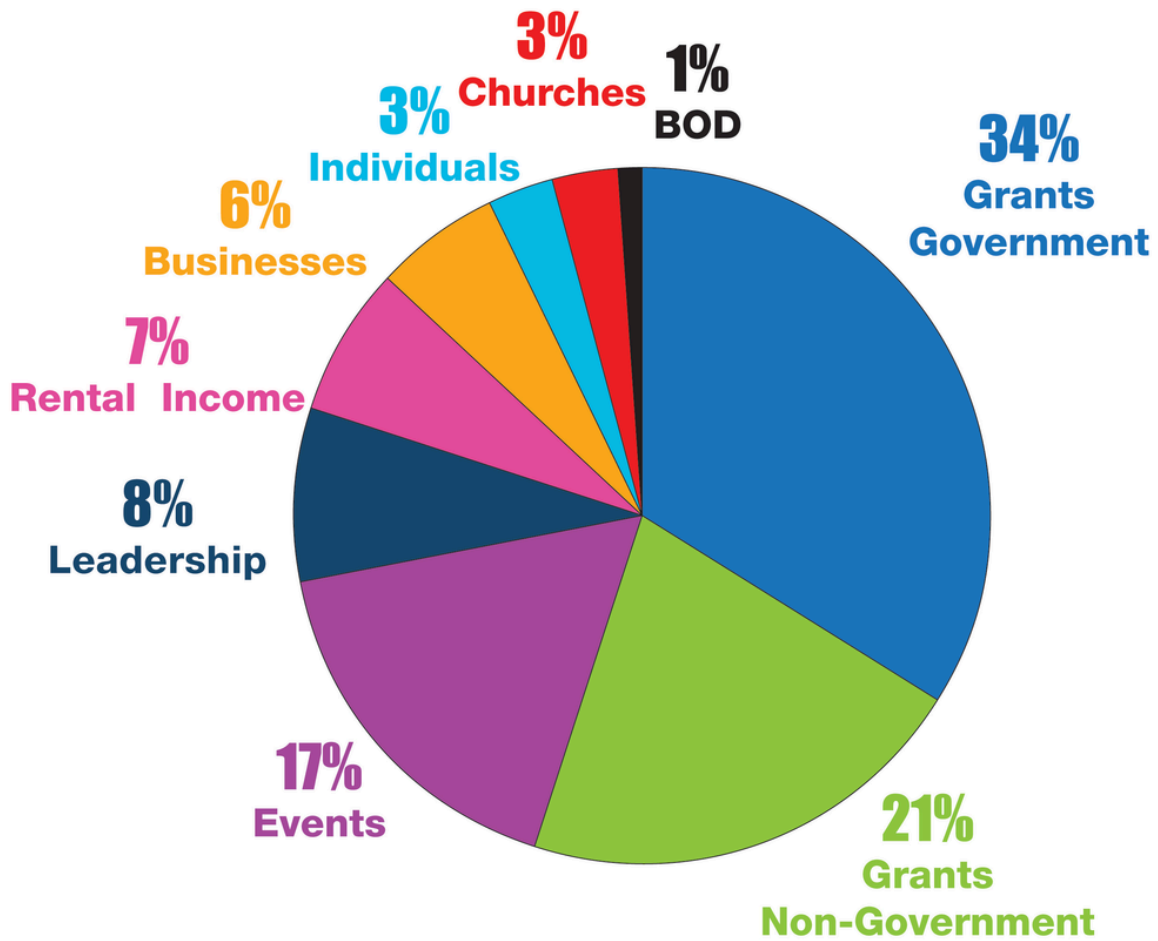


Funding Sources

Harford Family House is sustained by a diverse network of funding sources that make our mission possible. We receive vital support from government and non-government grants, which help fund our core programs and services. Our special events engage the community and raise both awareness and essential funds. Generous contributions from businesses, individual donors, and churches reflect a shared commitment to ending homelessness in our region.

Additionally, our Board of Directors and leadership donors play a critical role, not only in guiding our strategic vision but also in actively supporting our fundraising efforts. Together, these partners form a strong foundation that empowers us to serve with compassion, consistency, and impact.

Funding



“ I got to feel that there was hope again for my family, to have the strength, and to start rebuilding my life. - Asia, Former Resident ”

We extend our deepest gratitude to the many individuals, corporate partners, and philanthropic foundations whose generosity has made our work possible this year. Your unwavering support has empowered us to walk alongside families and individuals on their journey from homelessness to hope and stability. Whether through a personal donation, a corporate sponsorship, or a grant award, your belief in our mission has directly impacted lives, creating real and lasting change in our community. Thank you for being a vital part of the Harford Family House family. We couldn't do this work without you.

Annual Sponsors



HARFORD MUTUAL
INSURANCE GROUP

Donor Wall



Harford Financial Group
Retirement Income Specialists



Thank You

Donor Wall

Donations Made 07/01/2024 - 6/30/2025

Visionary Circle

(\$25,000 & more)

Kenneth S. Battye Charitable Trust
C.A.R.E. Property Services
The Drescher Foundation
The Samuel G. & Margaret
A. Gorn Foundation
Harford County Department
of Housing & Community Services
Harford Mutual Insurance Company
Maryland Department of Housing
& Community Development
United States Department of
Housing & Urban Development

Transformation Circle

(\$10,000-\$24,999)

Community Foundation
of Harford County
Maggie Costella & Russell Strickland
Edgewood Lions Club Foundation
Emmert Hobbs Foundation
Friedman Charitable Foundation
Friendly Inn
Larry & Melissa Guderjohn
Harford Financial Group
Leroy M. Merritt Charitable Trust
Mary K. O'Neill Foundation
Orrstown Bank
Philip A. Zaffere Foundation Inc.
Matt & Carol Rehak
Christopher Rollin
St. Ignatius Hickory Roman
Catholic Church
Stack & Store Self Storage
Spartan Surfaces
The Edward & Jeanne
Trexler Foundation, Inc.
The Herman & Walter
Samuelson Foundation
Greg & Liz Tutino

Stability Circle

(\$5,000-\$9,999)

Aberdeen Rotary Club
Acadia Windows & Doors
Alex Allman
Mary Benvegno
Bel Air Windows & Doors
Bush River Yacht Club
Princess Lea Utterbaugh
Capitol Finishes Flooring
Christ Our King Presbyterian Church
Ferrell Fuel Company
Saxon's Diamond Centers, Inc.
Gregory & Anne Fox
Harford Bank
Increditek
Frank Kellner III
Northern Chesapeake Unitarian
Universalist Society
Rick & Sallie Otenasek
Jim & Amy Owens
SAIC
Saxon's Diamond Centers, Inc.
St. Margaret's Church
Ronald Stallings
Mike & Kristy Thomson
Karen Tracy
Whiting Turner
Contracting Company

Empowerment Circle

(\$2,500-\$4,999)

Aberdeen Police FOP Lodge 128
Bernie Alaimo
APGFCU
CrossRoads Community Church
Bel Air Windows & Doors
Brian Donley
Kellie Edris
Scott & Valerie Elliott
Andy & Jeana Essery
Joseph Glynn

John Guckert
Harford Bank
Harford Community College
Harford County Deputy
Sheriff's Union
Harkins Builders Inc.
Ray & Judith Hebert
Hollywood Casino Perryville
Jones Junction
Sicilian Tenors
Tim & Michele Langhauser
Michael & Kimberly Lentz
Steve Linkous
Bill & Karen Matthews
Howard & Judy McComas III
Laura Mrugalski
Stephanie O'Neill
Ourisman Toyota 40
Brooks Shertzer
St. Matthew Lutheran Church
St. Mark's Roman Catholic Church
Nancy Stuckey Merritt
Tar Heel Construction Group LLC
The Goddard School
TJ Erisman Giving Fund
Terry Vettas
Brian Walker
Robert Yetter
Jeff & Kimberly Zavrotny

Foundation Circle

(\$1,000-\$2,499)

Margaret Beain
Bel Air Police Department
Bel Air United Methodist Church
Brian & Holly Benesch
Bethel Presbyterian Church
Big Blue Wave Productions, LLC
Jeff & Mary Biggs
Rick & Geri Bishop

Thank You

Donor Wall

Foundation Circle *continued*

(\$1,000-\$2,499)

James & Carolyn Boone

John Brannon

Annette Brown-Dinan

Col. Allan R Burke

Bruce & Bonnie Burns

Marlene Butler

Charm City Run

Chesapeake Professional

Women's Network, Inc.

Julie Chmura

Christopher Cisneros

The Cole Foundation

Constellation Energy

Matthew & Lauren Corbett

Thomas & Christine Davies

Greg & Rachel Derwart

Anthony DiPaula

DNA Solutions Baltimore

Lynese Domiano

Diane Eakes

Michael & Patricia Elliott

Evans Family

Fallston Presbyterian Church

Jeff & Jean Foulk

Adam & Donna Freeland

Maria & Rob Gagnier

Gemcraft Homes

GIO Technologies

Gordon Feinblatt, LLC

Emily Giordano

Jack Graham

Harford Community Church

HCO Innovations

Wilson Heaps

Hirsch Electric, LLC

Carol Hoffman

Joe & Brenda Hoffman

Don Hoyt

Laura Johnson Esq.

Dee Bogan

Jarrettsville Federal Savings
& Loan Assoc.

Wesley P. Johnson

Ike & Liz Jones

Kalista Enterprises

Kelly Benefits

Law Office of Stephanie Darling

Linda Van Name Charitable Fund

Loretta A Snell Charitable Trust

M&T Bank

Bob & Rita Malone

Dusty & Lisa McKeown

William & Maria Montgomery

Heath Morgan

Joseph & Karen S. Mosketti

Mountain Christian Church

Moving On 40

Mullen Anderson & Assoc

Patrick O'Neill

Sandra Osborn

Palumbo Insurance

Mike & Sue Parker

Adam Pattisal

Joe & Doris Pickerd

Sam & Denise Polakoff

Keith & Joanna Reagan

Nathan & McKenzie Reed

Danny & Susan Roarty

Rosedale Bank

Ron & Kelli Sayers

Robin Shay

Steven Sokolov

Autumn Sowders

Richard Spicer

St. John the Evangelist

St. Joan of Arc Catholic School

St. Margaret School

St. Mary of the Assumption Church

Sheariah Yousefi

Johnny A. Woods

The MMM Team

CrossCountry Mortgage, LLC

Patti Terry

Rich Tibbetts

Jim & Robin Tomechko

Kelly Trancucci

Trustees of Deer Creek

Monthly Meeting of Friends

Joseph & Sandi A. Tunney

Univ of MD

Upper Chesapeake Health

Bob Ward

Craig Ward

Ward Home Improvements

Wegmans Food Markets

William Watters Memorial

United Methodist Church

Lee & Stephanie-Marie Williams

Growth Circle

(\$500-\$999)

Jim & Vicki Antal

Edward & Jennifer Barnett

Len & Michelle Barwick

Bel Air Church of the Nazarene

Oliver & Donna Bell

Laura Blomquist

Ramona Bolen

Mark & Kimberly Burton

Billie Buxbaum

Renee Carter

Peter & Erum Charland

Chi Sigma Sorority, Inc.

Alpha Lambda Chapter

Restore Church

Church of the Ascension

Compass Home Group

Stephanie Wright

Thank You

Donor Wall

Growth Circle *continued* (\$500-\$999)

Church of Jesus Christ of Latter Day Saints	Kevin & Patricia Jablon	Slate Ridge Presbyterian Church
Constellation Energy	Amy Jahnigen	St. Andrew Orthodox Church
Cook Motorcars Ltd.	Jarrettsville Lions Club	St. Joan of Arc Catholic Church
Covanta PAC	Rick & Joanne Johnson	St. Paul's Lutheran Church, WELCA
Charles & Lauren Cox	John Karas	John & Jamey Struve
Cranberry United Methodist Church	Karis Management Group	T. Rowe Price Foundation, Inc.
Trudy Daniels	Scott & Trish Keck	Sharon Tyler
Adam Datesman	Larry & Patricia Keckler	AMES United Methodist Church
Carrienne Decarlo	Kelly Financial Group	Verdence Capital Advisors, LLC
Christopher & Laura Donovan	Lois King	Victorious Faith Fellowship
Chuck Egender	Scott & Rebecca Krieger	Kim Wagner
Andy & Pat Eiler	Glenn Kulik	Kathy Walsh
Everglaze Coatings	Guy & Christine Lambert	James & Joan Walters
Helen M. Farmer	Paul Lazor	John Wasilisin
Charles & Beatrice Filburn	Bill & Karen Leeb	Otto Wassenius
Freedom Federal Credit Union	Little Falls Meeting of Friends	WCT & Sons
John & Carol Freeman	Dave Lookenbill	Weis Markets
Gail Fricke	MacGregor's Restaurant & Tavern	Charles & Nadine Wellington
Fulton Mortgage Company	Ruthanna Maust	Greg & Alice Welsh
Malini Ganvir	McComas Funeral Home, P. A.	
Mike & Erin Germann	Dennis & Lilia Metz	Community Partner Circle
Malcolm & Anne Goodman	Donovan Murray	In-Kind Donations
Grace United Methodist Church	Glenn Nathan	3 East Telemetry UCMC
Great Hope Bible Church	Penn Cecil Maryland	4-H Teen Council
Jennifer Gross	Philip & Diana Perkins	Aberdeen Lioness Lions Club
Grove Presbyterian Church	Kathleen Phillips	Aberdeen Rotary
Dan & Kelly Haggerty	Bruce & Mary Portell	Abingdon Elks Lodge
Erik & Julie Halvorsen	Preston Chevrolet of Aberdeen	Amazon
Barton & Dawn Hamilton	Sarah Price	AMES United Methodist Church
Sue H. Hammen	Rebecca Puente	Angela Bossle
Harford County Public Library	Ronald & Shirley Querns	AORN Baltimore Chapter
Havre de Grace United Methodist Church	Efrain & Katie Ramirez	Ashley Huster
Charles & Debbie Henry	Jessica Rhoten	Beacon Staffing Alternatives
Nelson & Mary Herrman	Jim Richardson	Bel Air Church of Nazarene
Herud Family Living Trust	Kelly Richardson	Bel Air Rotary
Highland Presbyterian Church	Rock Strong Fitness	Bel Air United Methodist Church
Island Spice Grille & Lounge	Claudia Scarborough & Wilson Tharpe	Rich & Betsy Vanderbeek
Dale Spielman	Nancy Schmidt	Bill & Ann Cox
	Diane Sengstacke	Blend Salon

Thank You

Donor Wall

Community Partner Circle *continued*

In-Kind Donations

- | | | |
|-------------------------------------|----------------------------------|-----------------------------|
| Boykin Family | Heather Armiger | St. Joan of Arc |
| Breanna Hill | Iota Nu Chapter of Omega | St. Margarets Church |
| Brian Walker | PSI PHI Inc. | St. Paul's Lutheran |
| Bruce Portell | Jim & Sharon Smith | St. Ignatius Church |
| Bryan Cornell | Joe's Mercantile | St. Joan of Arc School |
| Bulle Rock Community | Jones Junction | St. Matthews Lutheran |
| Bush River Yacht Club | Josh & Keri Zader | St. Patrick's Church |
| Princess Lea Utterbaugh | Kailey Jourdan | Stefanie Houseknecht |
| Centre United Methodist Church | Knights of Columbus | ATCS- Stephen Williams |
| Christ Our King Presbyterian Church | Knights of Columbus | Sterling Care Bel Air |
| Church of the Holy Spirit | Ladies Auxiliary #11372 | Terri Preston |
| Church of Jesus Christ of | Krisan Frist | The John Carroll School |
| Latter-day Saints | Lakeisha Harrison | The Painted Ladies |
| Churchville Friday Quilters | Laura Ames Photography | The Schuster Foundation |
| Churchville Presbyterian Church | Bulle Rock Mahjong Group | Trinity Lutheran |
| Coon & Cole, LLC | Manuel Reyes | Union Chapel United |
| Cornerstone Baptist | Mark & Mary Willard | Methodist Church |
| Coty, Inc. | Masjid Al-Falaah | Unitarian Universalist |
| Denise Polakoff | Messiah Community Church | Upper Chesapeake Bay Pearls |
| Diane Ellzy | Mountain Christian Church | Vailesha Parker |
| Don Testerman | Mt. Zion Baptist Church | Vineyard Church at the Farm |
| Edgewood High School | Mt. Zion Church | Webster Congregational |
| Empower 4 Life | Norrisville United | Christian Church |
| Encouraging Souls Ministry | Methodist Church | Williams Family |
| Fallston Presbyterian Church | North Chesapeake 2016 | Womens Giving Circle |
| Fanatics | Thunder Team | Yvonne Malick |
| Flying Geese Quilt Guild | Oak Grove Baptist | Zoripal Homecare |
| Gordon Food Services | Parsons Corporation | |
| Grace Church of Bel Air | Ray Hebert | |
| Grove Presbyterian Church | Rita Isikaku | |
| Harford Community Action Agency | Ron Schulte Masonry | |
| Harford County Housing | Saxon's Diamond Center | |
| & Comm. Services | Scott Kapp Jr. | |
| Harford Day School | Scott Kuhlman- Heart to Beat LLC | |
| Harford Mutual Insurance Group | Southampton Middle School | |
| Havre de Grace United | Southern Harford County | |
| Methodist Church | Rotary Club | |
| Harford County Public Library | Sovereign Grace | |
| Bel Air Branch | Spartan Surfaces | |
| K Law | St. Frances de Sales | |

Thank You





Phone Number

410.273.6700



Email Address

info@harfordfamilyhouse.org



Website

harfordfamilyhouse.org

Harford Family House is the largest provider of shelter and support for families and individuals experiencing homelessness in Harford County.